



Flat 8 Stocks House West Street | | Sompting | BN15 0BB





Flat 8 Stocks House West Street | | Sompting | BN15 0BB

£180,000

*** £180,000 ***

WARWICK BAKER ESTATE AGENTS ARE OFFERING TO THE MARKET THIS FIRST FLOOR TWO DOUBLE BEDROOM APARTMENT IN SOMPTING.

IN NEED OF MODERNISATION THIS SPACIOUS PROPERTY HAS STUNNING SOUTHERLY ASPECT VIEWS ACROSS FIELDS AND A GARAGE.

SHARE OF FREEHOLD - LEASE - 999YRS FROM 1961

CALL NOW - 01273 461144

- STUNNING VIEWS
- IN NEED OF MODERNISATION
- TWO DOUBLE BEDROOMS
- QUIET LOCATION
- SHARE OF FREEHOLD
- CALL NOW TO VIEW
- 01273 461144

SHARE OF FREEHOLD

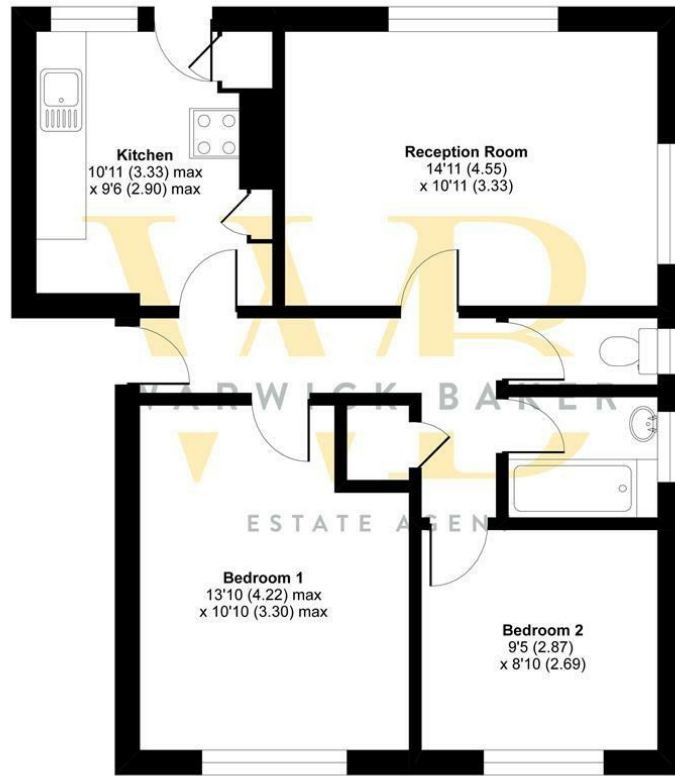
MAINTENANCE - £175 PAYABLE
EVERY 1/4

LEASE - 999YRS FROM 1961 -
939YRS REMAINING



West Street, Sompting, Lancing, BN15

Approximate Area = 644 sq ft / 59.8 sq m
For identification only - Not to scale



FIRST FLOOR

Floor plan produced in accordance with RICS Property Measurement Standards incorporating International Property Measurement Standards (IPMS2 Residential). © nichcom 2021. Produced for Warwick Baker Estate Agent Ltd. REF: 685413.



Disclaimer

* These particulars are intended to give a fair and substantially correct overall description for the guidance of intending purchasers and do not constitute an offer or part of a contract. Prospective purchasers and/or lessees ought to seek their own independent professional advice.

* All descriptions, dimensions, areas, references to condition and necessary permissions for use and occupation and other details are given in good faith and are believed to be correct, but any intending purchasers should not rely on them as statements or representations of fact, but must satisfy themselves by inspection or otherwise as to the correctness of each of them.

* All measurements are approximate

Energy Efficiency Rating		Environmental Impact (CO ₂) Rating			
	Current	Potential		Current	Potential
Very energy efficient - lower running costs			Very environmentally friendly - lower CO ₂ emissions		
(92 plus) A			(92 plus) A		
(81-91) B			(81-91) B		
(69-80) C			(69-80) C		
(55-68) D			(55-68) D		
(39-54) E			(39-54) E		
(21-38) F			(21-38) F		
(1-20) G			(1-20) G		
Not energy efficient - higher running costs			Not environmentally friendly - higher CO ₂ emissions		
England & Wales	EU Directive 2002/91/EC		England & Wales	EU Directive 2002/91/EC	